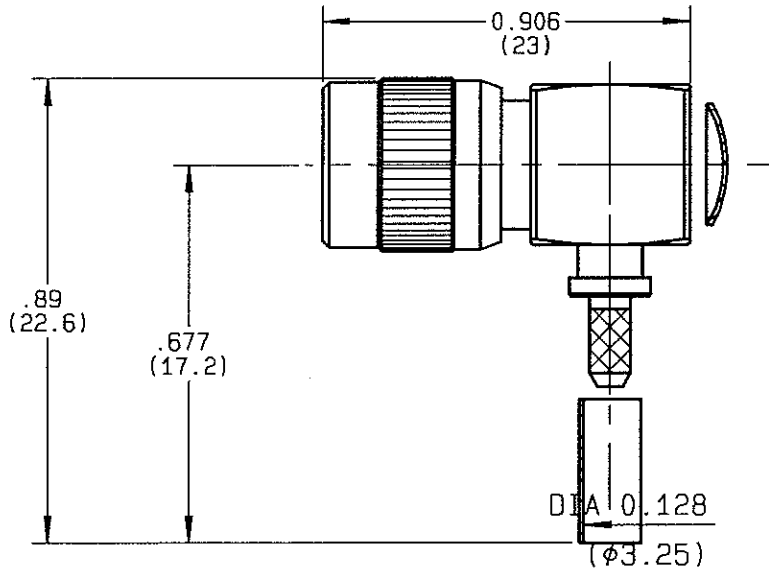


**RIGHT ANGLE PLUG CRIMP TYPE
CABLE 2.6/75**

R129.181.000
SERIES DIN V1.6-5.6



NOMINAL IMPEDANCE	75 Ω	CABLES : RG 179
FREQUENCY RANGE	0-1 GHz	RG 187
TEMPERATURE RATING	-40/+155 °C	
V.S.W.R	1.22 + x F(GHz)Maxi	
RF INSERTION LOSS	NA √F(GHz) dB Maxi	
VOLTAGE RATING	330 Veff Maxi	
DIELECTRIC WITHSTANDING VOLTAGE	1000 Veff Mini	
INSULATION RESISTANCE	10000 M ΩMini	OTHERS CHARACTERISTICS
HERMETIC SEAL	NA Atm.cm ³ /s	CABLE RETENTION
LEAKAGE (pressurized only)	NA	50 N Mini
MECHANICAL DURABILITY	Cycles	CENTER CONTACT RETENTION
WEIGHT	10.5 gr	Axial force - mating end
SPECIFICATION		30 N Mini
		Axial force - opposite end
		30 N Mini
		Torque
		NA cm.N Mini
		RECOMMENDED TORQUES
		Mating
		NA cm.N
		Panel nut
		NA cm.N
		Clamp nut
		NA cm.N

CONNECTOR PARTS	MATERIALS	FINISH	(all values are given) in micrometers
BODY	BRASS	NICKEL 2	
OUTER CONTACT	BRONZE	NICKEL 2	
CENTER CONTACT	BRASS	GOLD 1.3 OVER NICKEL 2	
INSULATOR	PTFE	-	
GASKET		-	
OTHERS PIECES	BRASS	NICKEL 2	

ISSUE	CREATION DATE	FILE PART-NUMBER
A	12-SEP-94	93-0728-004



Connect to the future

The information given here is subject to change without notice.
Design changes may be in order to improve the product.

LELE



RADIALL®

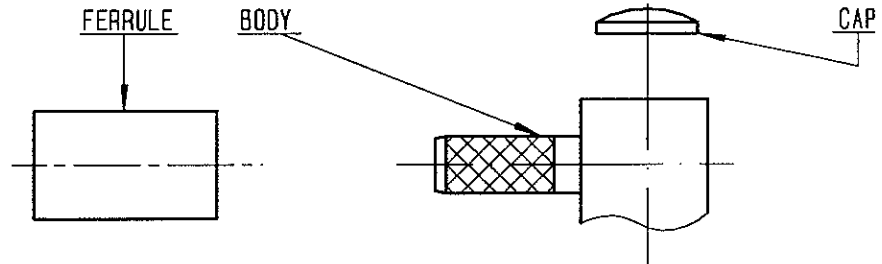
R129.181.000

ISSUE

A

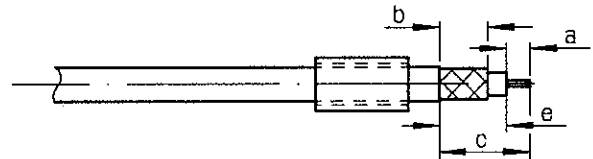
SERIES

DIN V1.6-5.6



①

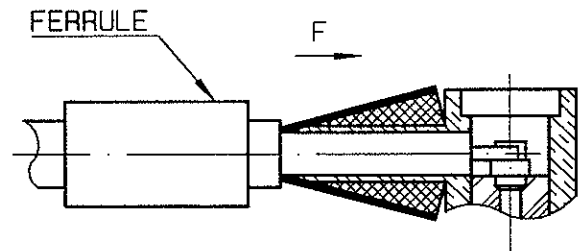
Slide ferrule onto cable .
Strip the cable .



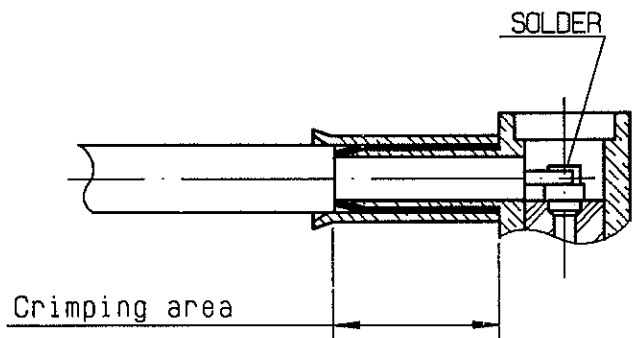
Stripping	a	b	c	d	e
inch	0.098	0.256	0.63	0	0.531
mm	2.5	6.5	16		13.5

②

Fan the braid .
Push connector body under the braid .
Slide ferrule over braid
(in direction F)



Crimp the ferrule with crimping tool
R282 211 000 (Hex. : 3.25) or
crimping tool R 282 293 000 (M22520/5-01)
+ dies R 282 235 003 (M22520/5-03)
Solder inner conductor .



④

Place the cap into body.
Press cap flush or slightly below surface
of body assembly .

